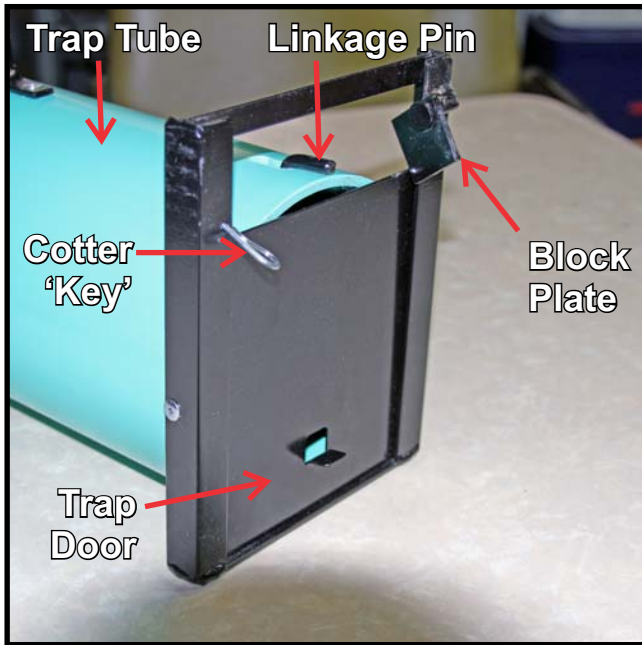
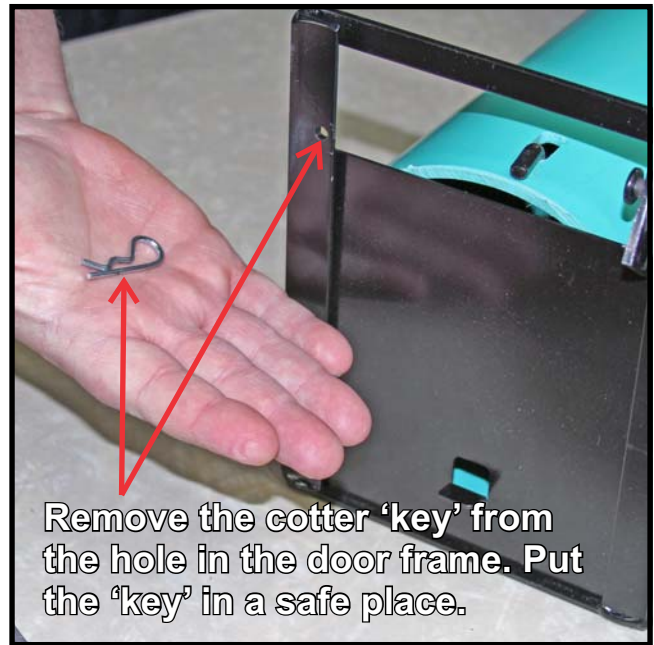


# Setting the No-Spray Skunk Trap New Push-Rod Linkage Design



#1. Identify the parts



#2. Pull the Cotter Key



#3. Lift the Trap Door



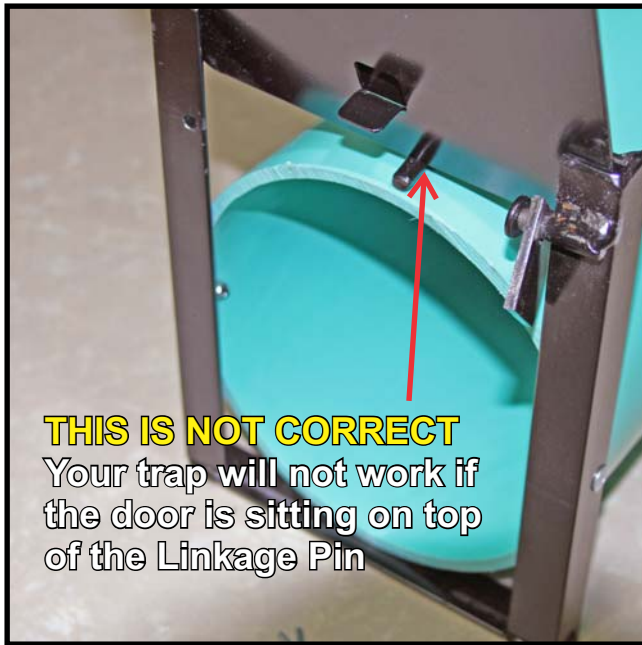
#4. Rest Trap Door on Trap Tube

*continued on back* →



**Nixalite® of America Inc**  
1025 16th Avenue East Moline, IL. 61244  
Experts In Architectural Bird Control Since 1950

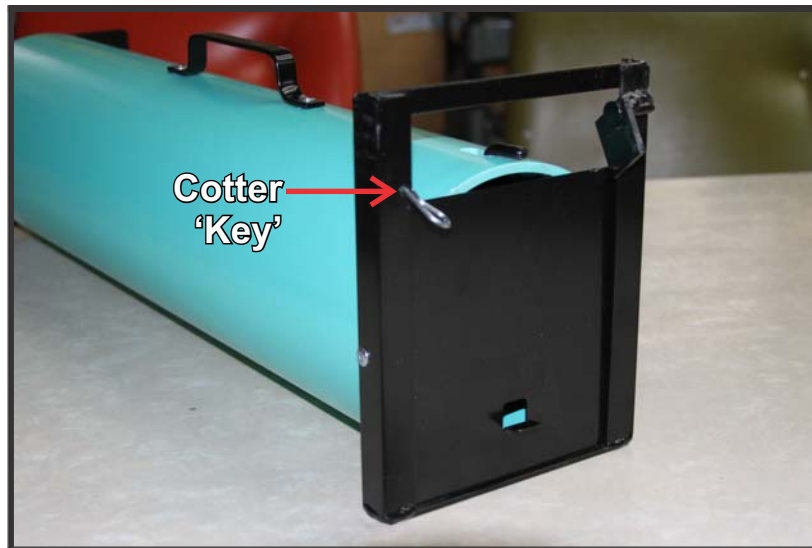
Phone: 800.624.1189 or 309.755.8771  
Fax: 800.624.1196 or 309.755.0077  
Email: [birdcontrol@nixalite.com](mailto:birdcontrol@nixalite.com)  
Web: [www.nixalite.com](http://www.nixalite.com)



**#5. What NOT TO DO**



**#6. Make sure the Trip Pan is set**



**#7. Put Cotter Key in hole to lock the Trap Door when transporting an animal in trap**

**IMPORTANT NOTE:** Having the best trapping equipment does not guarantee trapping success. Bird and animal trapping can be as much art as it is science and you might not catch anything. Effective trapping takes careful planning, a knowledge of the target species, the correct bait, trap location and more.

Visit our website at [www.nixalite.com](http://www.nixalite.com) or contact Nixalite at 800.624.1189 or fax 800.624.1196



**Nixalite® of America Inc**  
1025 16th Avenue East Moline, IL. 61244  
Experts In Architectural Bird Control Since 1950

Phone: 800.624.1189 or 309.755.8771  
Fax: 800.624.1196 or 309.755.0077  
Email: [birdcontrol@nixalite.com](mailto:birdcontrol@nixalite.com)  
Web: [www.nixalite.com](http://www.nixalite.com)